



YOUR TRIP TO **NERINGA**

Neringa is a resort municipality located on the Curonian Spit, separating it from the mainland of Lithuania. It is one of the oldest resorts in the country and attracts hundreds of thousands of tourists annually.

GETTING TO NIDA

You can reach Nida by taking a ferry from The Old Ferry Terminal (Danės st. 1, Klaipėda), which is 10 minutes away from the old town. The ferry runs every 15 minutes and costs 1,30 Eur per person.

The Ferry will take you to Smiltynė, from which you can take a bus to Nida (about 50km).

These are the bus stops:

Smiltynė - Juodkrantė - Pervalka - Preila - Nida

Each stop has something unique to offer to visitors, so if you have time, you can explore the settlements on your way to Nida.

More Information:
www.klaipedatravel.lt



HILL OF WITCHES

L. Rėzos g., Juodkrantė

The Hill of Witches is one of the most unique outdoor galleries nationwide, featuring a wide variety of wooden sculptures depicting witches, devils, and other mythological creatures.

Make a stop and visit it on your way to Nida, in the settlement of Juodkrantė.

Suggested Visit Duration: 1-2 hours



More Information:
www.raganukalnas.lt



NAGLIAI TRAIL

Kelio Smiltynė - 32 km, Nida

The Nagliai Cognitive Trail is a 1,1 km long path that takes you on a journey through the masses of dead sand dunes, where four villages were buried several centuries ago.

Be sure to follow the designated trail on your trip, as the winds sweeping through the sand can prove hazardous.

Aside from taking in the magnificent scenery, you will have a chance to get acquainted with rare flora and fauna local to the region.

Suggested Visit Duration: 1-2 hours

More Information:
<https://nerija.lrv.lt>



DUNE OF PARNIDIS

93124 Neringos sav.

The Dune of Parnidis is among the tallest sand dunes across the entirety of Europe, sitting at 52 metres above sea level, from which the Baltic Sea and the Curonian Lagoon can be observed.

Suggested Visit Duration: 1 hour

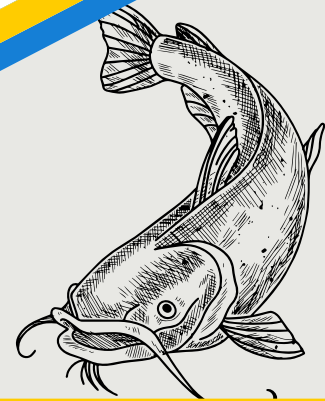


NIDA BEACH

Nida is famous for its beautiful beaches with clean, white sand and clear water.

You can't go wrong with any of the beaches, but be sure to visit Nida Beach during your trip, as it is known for its beautiful scenery, natural landscape and calm (even during summer season).

Suggested Visit Duration: 2-3 hours

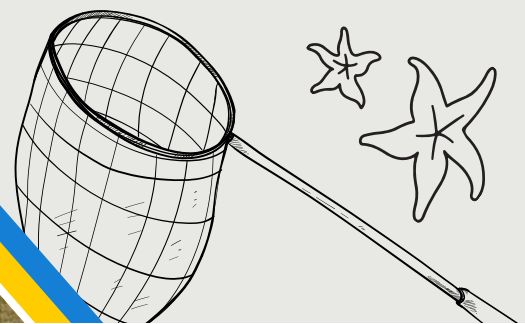


FISHERMEN'S MUSEUM

Naglių g. 4, Nida

The Ethnographic Fishermen's Museum showcases a variety of indigent fishermen's clothing and tools, religious artifacts, and tells stories about ancient fishing practices.

Suggested Visit Duration: <1 hour



RESTAURANTS



Zuikio Daržas

Nidos-Smiltynės pl. 7a, Nida

A hip and trendy restaurant specializing in European-style pizza dishes suitable for vegetarian and vegan diets.

www.facebook.com/zuikiodarzas



Žuvelė

L. Rėzos g. 1, Juodkrantė

A seasonal summer restaurant specializing in local fish dishes and homemade desserts. Vegetarian friendly.

www.facebook.com/zuvele



Nerija

Smiltynės g.15, Smiltynė

A restaurant serving fresh, grilled barbecue and seafood dishes made according to traditional Lithuanian recipes.

www.nerija.priejuros.lt

